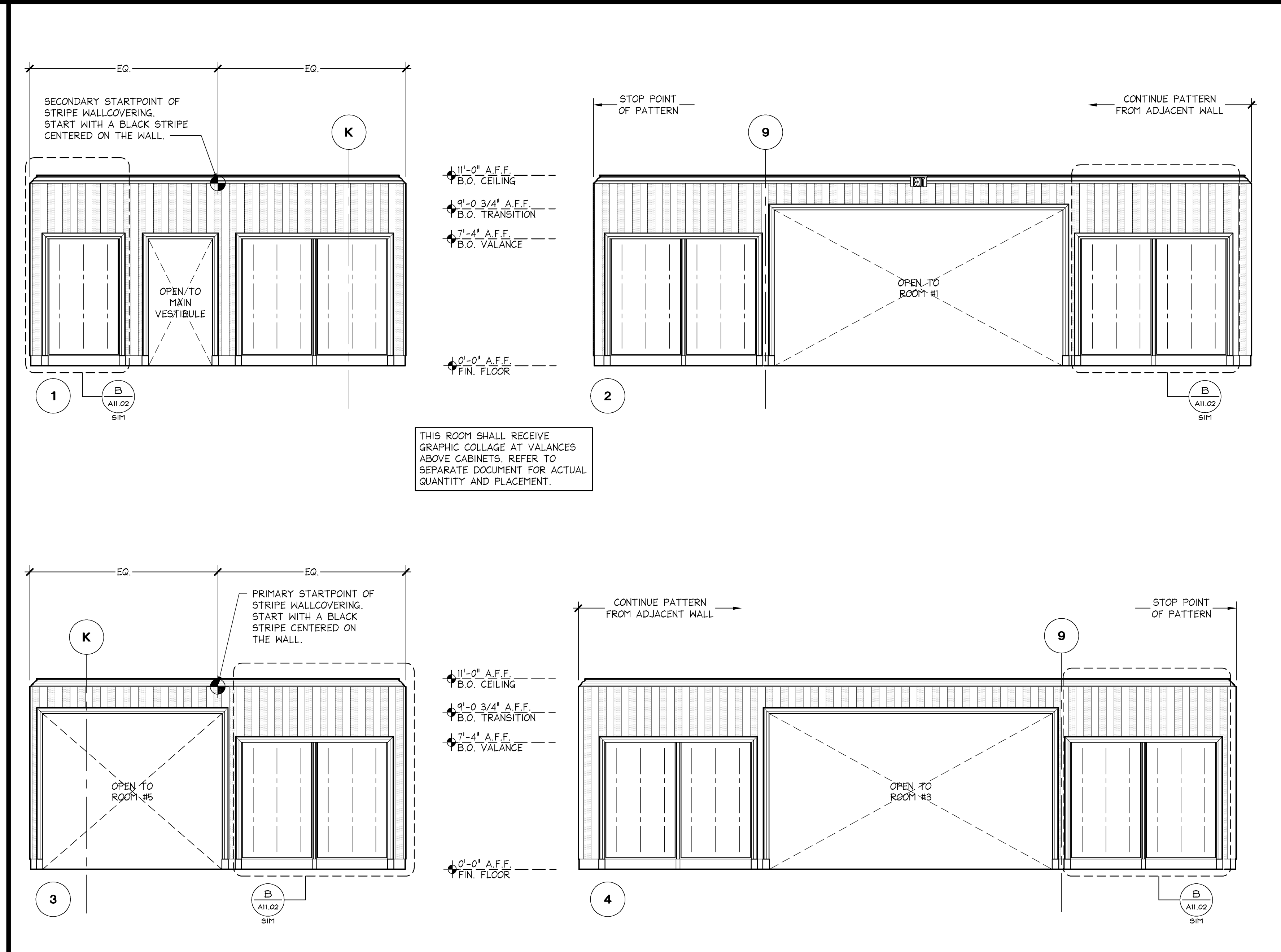


ROOM #3 - BRA SALON ELEVATIONS

1/4" = 1'-0"

L



ROOM #2 - VSL 2 ELEVATIONS

1/4" = 1'-0"

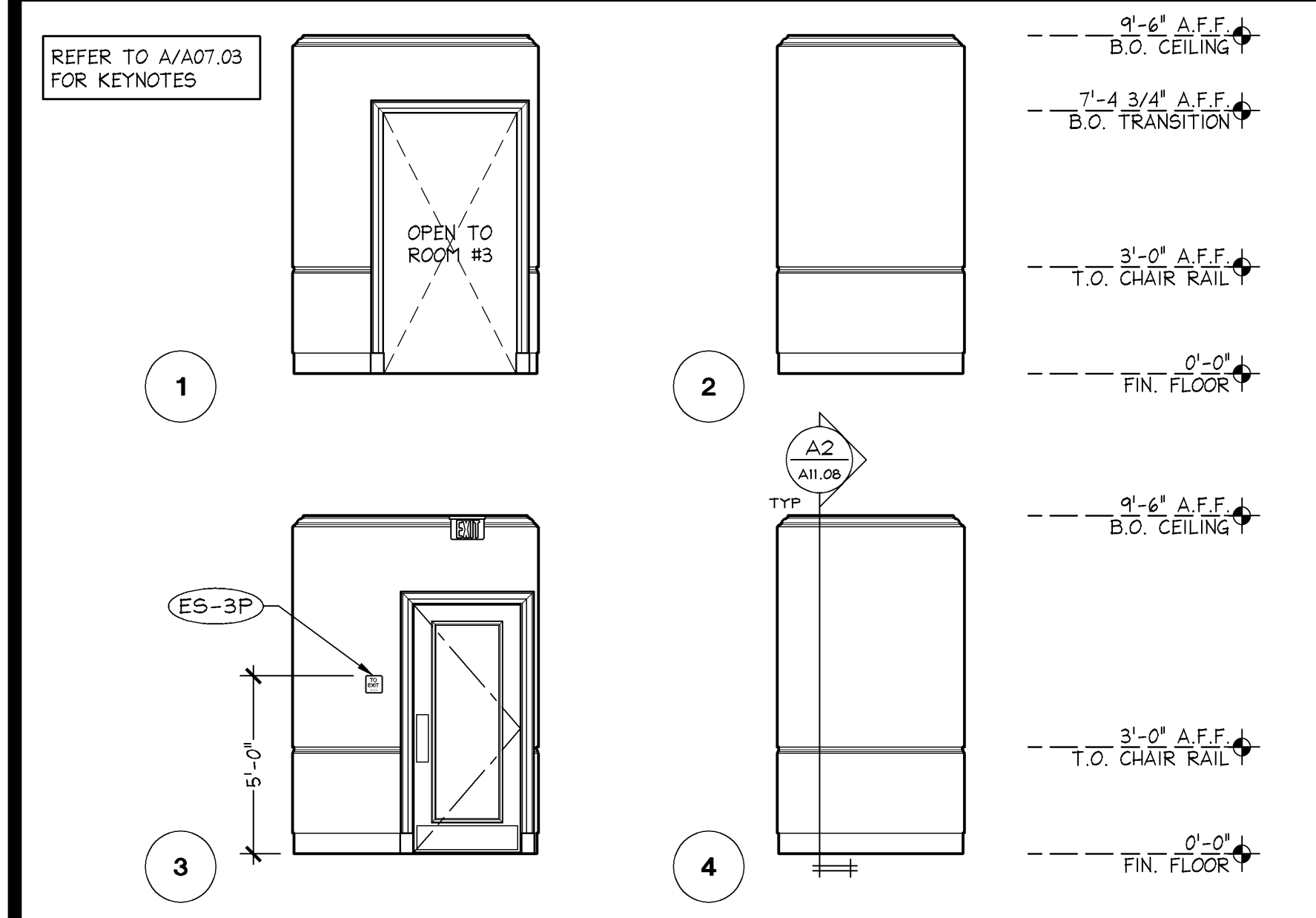
C



VSL STOREFRONT ELEVATIONS

1/4" = 1'-0"

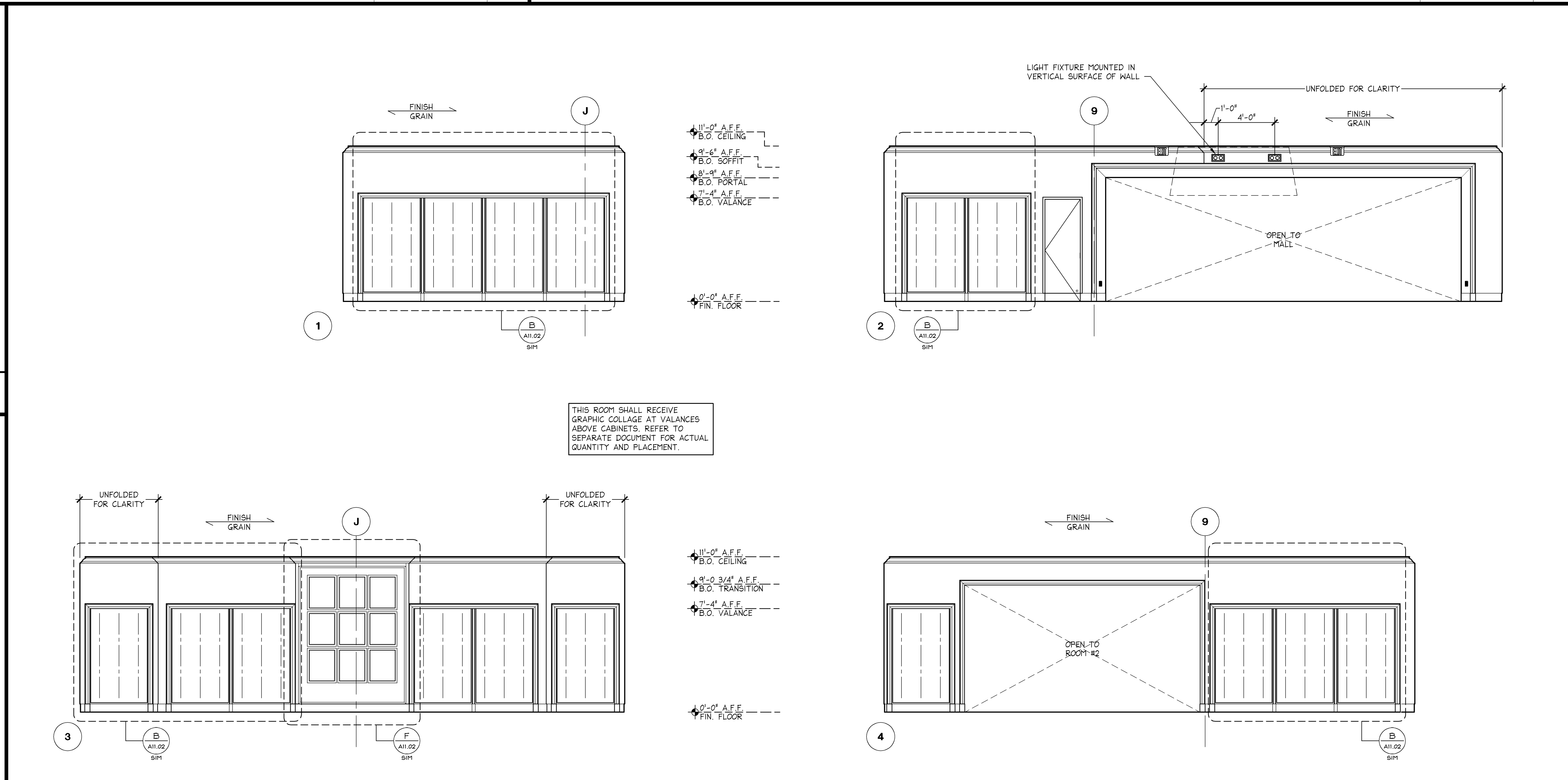
P



VESTIBULE ELEVATIONS

1/4" = 1'-0"

N



ROOM #1 - VSL 1 ELEVATIONS

1/4" = 1'-0"

A